



Know-how from Site to Shelf

TIPS

- For best results store Sika Anchor Fix cartridges at approximately 65 - 75°F for about 24 hours prior to use.
- Do not store cartridges in direct sunlight.
- Always replace nozzle prior to dispensing fresh material.
- Always wear protective equipment i.e.; chemical resistant gloves, goggles when handling and applying materials.
- For health and safety information, see the material safety data sheet available at www.sikaconstruction.com.



Sika® AnchorFix

How-to Guide Adhesive Anchoring Systems



Anchoring Projects

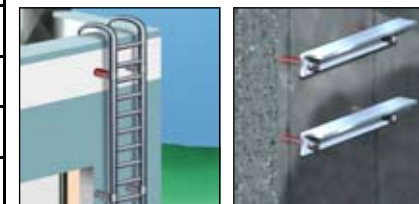
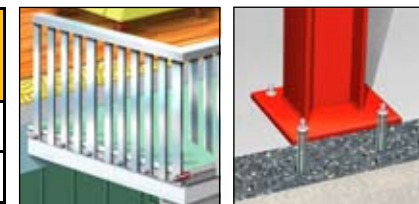
Sika AnchorFix-1

| Project | Sika AnchorFix-1 |
|----------------|------------------|
| Railings | ▲ |
| Bolts, Dowels | ▲ |
| Pins, Rebar | ▲ |
| Handicap Rails | |
| Light Post | |
| Deck Supports | |
| Pipes, Rods | |

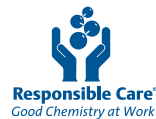


Sika AnchorFix-2

| Project | Sika AnchorFix-2 |
|----------------|------------------|
| Railings | ▲ |
| Bolts, Dowels | ▲ |
| Pins, Rebar | ▲ |
| Handicap Rails | ▲ |
| Light Post | ▲ |
| Deck Supports | ▲ |
| Pipes, Rods | ▲ |



Every Project Deserves The Best...



All sales of Sika products are subject to Sika's current Terms and Conditions of Sale available at www.sikacorp.com or by calling 201-933-8800. Prior to each use of any Sika product, the user must always read and follow the warnings and instructions on the product's most current Technical Data Sheet, product label and Material Safety Data Sheet, which are available at www.sikaconstruction.com or by calling Technical Services at 1-800-933-7452. Nothing contained in any Sika materials relieves the user of the obligation to read and follow the warnings and instructions for each Sika product as set forth in the current Technical Data Sheet, product label and Material Safety Data Sheet prior to product use.

The sale of all Sika products are subject to the following Limited Warranty:

LIMITED MATERIAL WARRANTY

SIKA warrants this product for one year from date of installation to be free from manufacturing defects and to meet the technical properties on the current Technical Data Sheet if used as directed within shelf life. User determines suitability of product for intended use and assumes all risks. Buyer's sole remedy shall be limited to the purchase price or replacement of product exclusive of labor or cost of labor.

NO OTHER WARRANTIES EXPRESS OR IMPLIED SHALL APPLY INCLUDING ANY WARRANTY OF MERCHANTABILITY OR FITNESS FOR A PARTICULAR PURPOSE. SIKA SHALL NOT BE LIABLE UNDER ANY LEGAL THEORY FOR SPECIAL OR CONSEQUENTIAL DAMAGES. SIKA SHALL NOT BE RESPONSIBLE FOR THE USE OF THIS PRODUCT IN A MANNER TO INFRINGE ON ANY PATENT OR ANY OTHER INTELLECTUAL PROPERTY RIGHTS HELD BY OTHERS.



Sika Corporation

Business Unit Distribution
201 Polito Avenue
Lyndhurst, NJ 07071
Phone 800 933 7452
Fax 201 933 6225
www.sikaconstruction.com

© Sika Corporation/BU Distribution 07/09

Consult most current Product Data Sheet prior to any use.



Sika® AnchorFix-1

Anchoring Adhesive



Applications

- For common anchoring projects such as railings, bolts, dowels, pins, rebar and more!

Advantages

- Reaches the strength of concrete in minutes.
- Can cure in subfreezing temperatures.
- Solvent and styrene-free.



Packaging

10 or 20 fl. oz. cartridges

Sika® AnchorFix-2

Anchoring Adhesive



Applications

- For heavy duty anchoring projects.

Advantages

- Fast set time.
- Can be dispensed/mixed with a standard caulking gun.
- High bond strength.
- Can cure in subfreezing temperatures.
- Solvent and styrene-free.

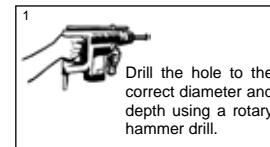


Packaging

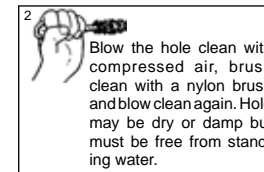
10 or 20 fl. oz. cartridges

Methods of Use

Solid Base Materials



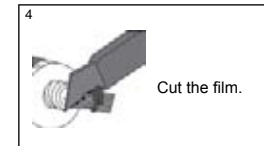
Drill the hole to the correct diameter and depth using a rotary hammer drill.



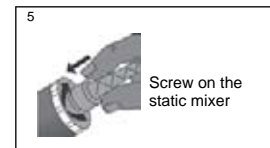
Blow the hole clean with compressed air, brush clean with a nylon brush and blow clean again. Hole may be dry or damp but must be free from standing water.



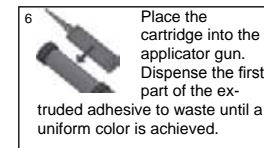
Unscrew and remove the cap.



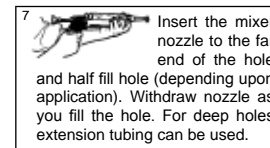
Cut the film.



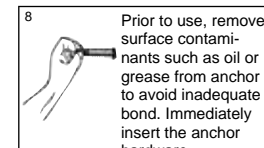
Screw on the static mixer



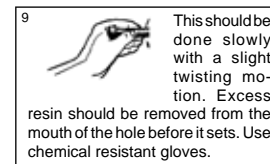
Place the cartridge into the applicator gun. Dispense the first part of the extruded adhesive to waste until a uniform color is achieved.



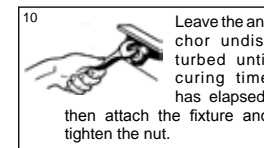
Insert the mixer nozzle to the far end of the hole and half fill hole (depending upon application). Withdraw nozzle as you fill the hole. For deep holes extension tubing can be used.



Prior to use, remove surface contaminants such as oil or grease from anchor to avoid inadequate bond. Immediately insert the anchor hardware.



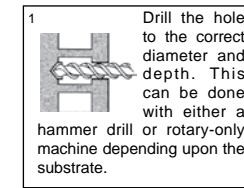
This should be done slowly with a slight twisting motion. Excess resin should be removed from the mouth of the hole before it sets. Use chemical resistant gloves.



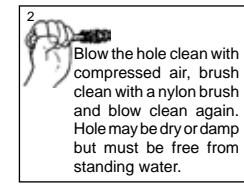
Leave the anchor undisturbed until curing time has elapsed, then attach the fixture and tighten the nut.

Methods of Use

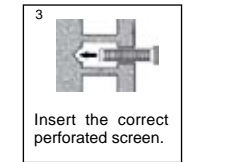
Hallow Base Materials



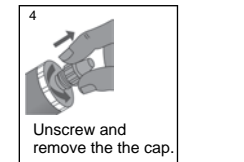
Drill the hole to the correct diameter and depth. This can be done with either a hammer drill or rotary-only machine depending upon the substrate.



Blow the hole clean with compressed air, brush clean with a nylon brush and blow clean again. Hole may be dry or damp but must be free from standing water.



Insert the correct perforated screen.



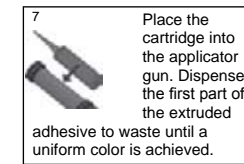
Unscrew and remove the the cap.



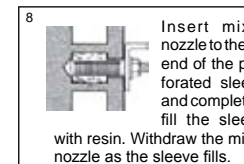
Cut the film.



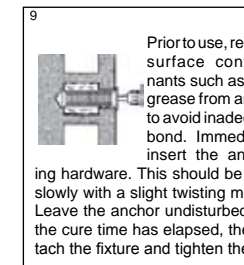
Attach the static mixing nozzle.



Place the cartridge into the applicator gun. Dispense the first part of the extruded adhesive to waste until a uniform color is achieved.



Insert mixer nozzle to the far end of the perforated sleeve and completely fill the sleeve with resin. Withdraw the mixer nozzle as the sleeve fills.



Prior to use, remove surface contaminants such as oil or grease from anchor to avoid inadequate bond. Immediately insert the anchoring hardware. This should be done slowly with a slight twisting motion. Leave the anchor undisturbed until the cure time has elapsed, then attach the fixture and tighten the nut.

AnchorFix 1 Gel and Cure Times:

| Application Temperature | Gel Time | Cure Time |
|-------------------------|------------|-------------|
| 86°F (30°C) | 3 minutes | 25 minutes |
| 68°F (20°C) | 7 minutes | 50 minutes |
| 50°F (10°C) | 22 minutes | 150 minutes |
| 41°F (5°C) | 50 minutes | 200 minutes |
| 14°F (-10°C) | 80 minutes | 24 hours |

AnchorFix 2 Gel and Cure Times:

| Application Temperature | Gel Time | Cure Time |
|-------------------------|------------|------------|
| 95°F (35°C) | 2 minutes | 25 minutes |
| 86°F (30°C) | 3 minutes | 35 minutes |
| 68°F (20°C) | 5 minutes | 40 minutes |
| 50°F (10°C) | 8 minutes | 70 minutes |
| 41°F (5°C) | 12 minutes | 90 minutes |
| 32°F (0°C) | 20 minutes | 3 hours |
| 23°F (-5°C) | 50 minutes | 15 hours |
| 14°F (-10°C) | 80 minutes | 24 hours |